

Literacy

Equation $y = mx + c$
Gradient
Intercept

Research

Explain how to find the gradient and intercept

Memory

Gradient = rise/run
Intercept is the cut on the y axis

Complete the table of values for $4x + y = 20$.

x	0	1	2	3	4	5
y						

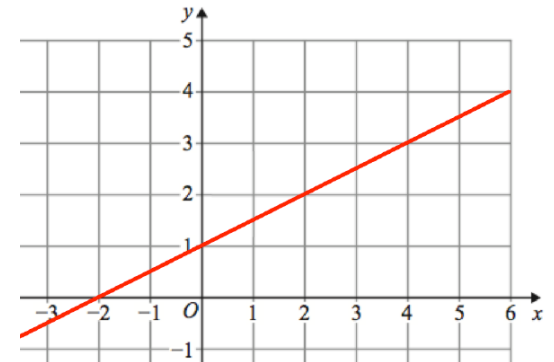
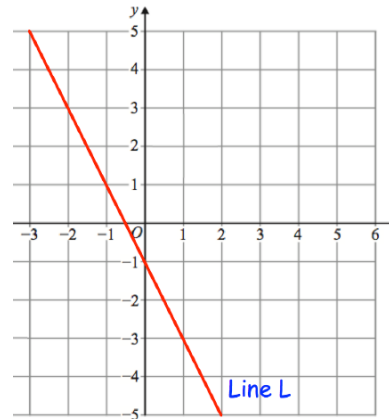
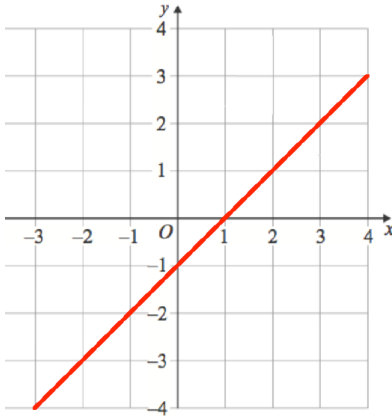
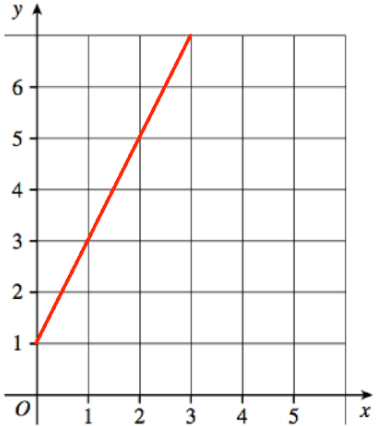
Complete the table of values for $y = 6 - x$

x	0	1	2	3	4	5
y						

GETTING IT.

For each line here
Calculate the gradient
Then find the equation of the line

GOT IT



$y = mx + c$

NAILED IT

a. Find 3 more lines parallel to the line $y = 3x - 1$

b. Find the gradient and intercept of the line $2y = 6x + 10$