

Literacy

Explain what the word **rotate** does to a shape

Research

Why do we have 360° in a complete revolution?

Memory

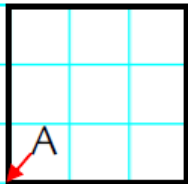
90° is $\frac{1}{4}$ and 180° is $\frac{1}{2}$ a turn

GETTING IT.

Rotations

Rotate the shapes 90° clockwise about point A and draw the new position.

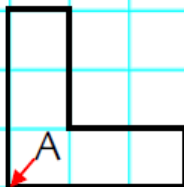
A1



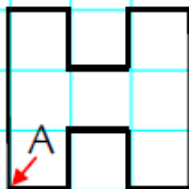
A3



A2

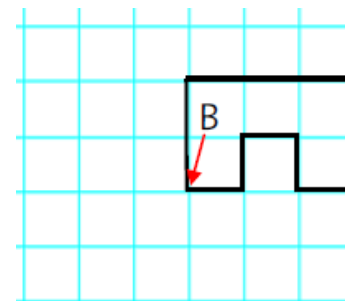
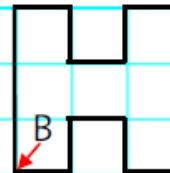


A4

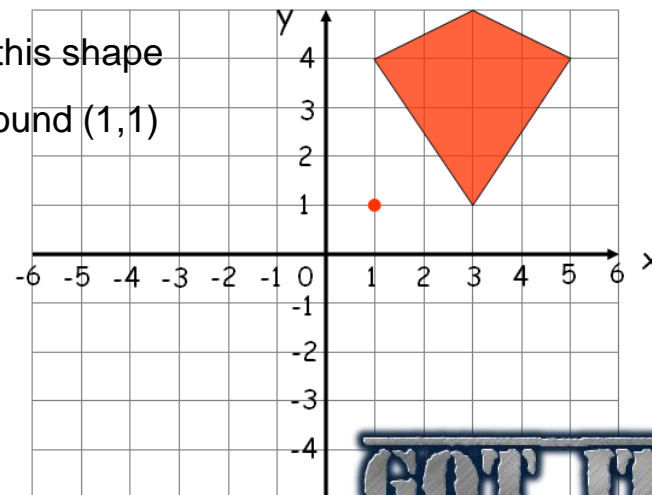


Rotate the shapes 180° about point B and draw the new position.

B1



Rotate this shape
 180° around (1,1)



GET IT